

The Cuddle Dolls

DAISY & FRIENDS

AN ONLINE WALDORF DOLL MAKING WORKSHOP

— — — — — = stitch line

— · — · — · — = cutting line

BODY

cut two on fold
from stretch
cotton or double
cotton gauze

PLACE ON FOLD
DO NOT CUT BETWEEN A & B

The Cuddle Dolls

WWW.NATALIETRUSLER.COM

(optional) Handstitch once doll
is stuffed to create feet

leave open to stuff

HANDS

cut two
from
tricot

stretch

(Neck Line)

leave open to stuff

ARMS

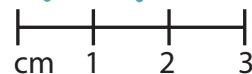
cut two on fold
from stretch
cotton or double
cotton gauze

PLACE ON FOLD

The Cuddle Dolls

WWW.NATALIETRUSLER.COM

Insert hands here



WWW.NATALIETRUSLER.COM

©2024 This pattern is copyright. All rights reserved.
This pattern is for personal use only and cannot be
sold for commercial use nor can the finish items be
sold online for personal profit.

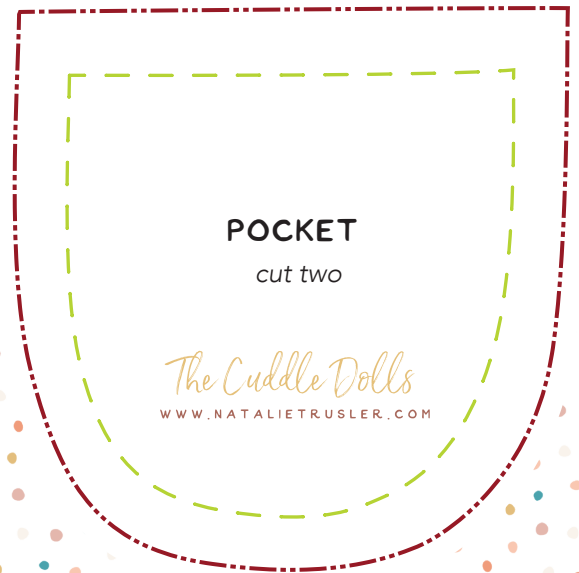
The Cuddle Dolls

DAISY & FRIENDS

AN ONLINE WALDORF DOLL MAKING WORKSHOP

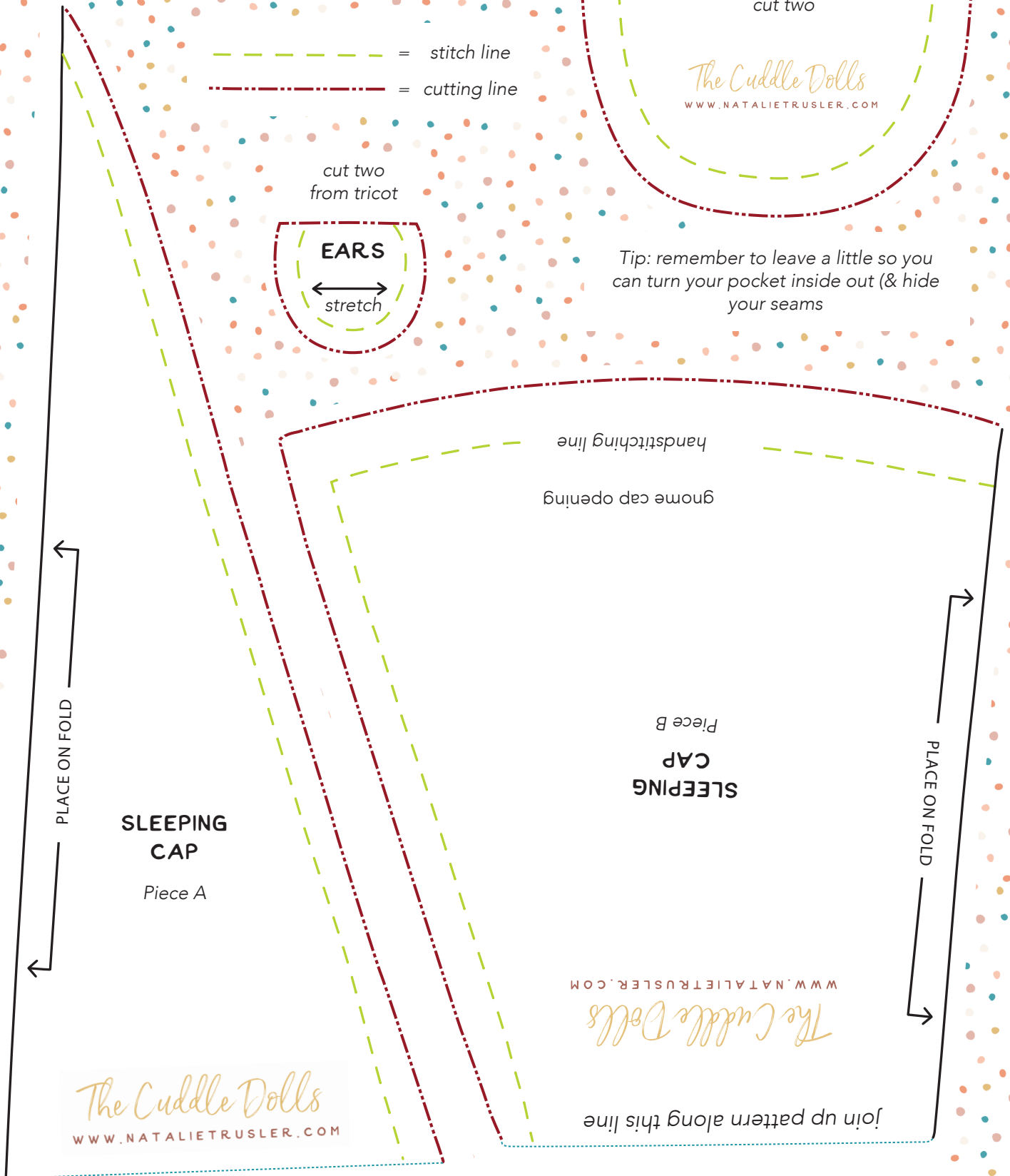
--- = stitch line
 -.-.- = cutting line

cut two
from tricot



The Cuddle Dolls
 WWW.NATALIETRUSLER.COM

Tip: remember to leave a little so you
 can turn your pocket inside out (& hide
 your seams



The Cuddle Dolls
 WWW.NATALIETRUSLER.COM

The Cuddle Dolls
 WWW.NATALIETRUSLER.COM

join up pattern along this line

cm 1 2 3



WWW.NATALIETRUSLER.COM

©2024 This pattern is copyright. All rights reserved.
 This pattern is for personal use only and cannot be
 sold for commercial use nor can the finish items be
 sold online for personal profit.

The Cuddle Dolls

DAISY & FRIENDS

AN ONLINE WALDORF DOLL MAKING WORKSHOP

— = stitch line
- - - = cutting line

INNER BODY - OPTIONAL FOR WEIGHTED CUDDLE DOLL

cut two from
single knit lining

The Cuddle Dolls

WWW.NATALIETRUSLER.COM



WWW.NATALIETRUSLER.COM

©2024 This pattern is copyright. All rights reserved.
This pattern is for personal use only and cannot be
sold for commercial use nor can the finish items be
sold online for personal profit.