

# The Cuddle Dolls

## DAISY & FRIENDS

AN ONLINE WALDORF DOLL MAKING WORKSHOP

(PATTERN SCALED TO 80%)

--- = stitch line  
- - - = cutting line

### BODY

cut two on fold  
from stretch  
cotton or  
double cotton  
gauze

PLACE ON FOLD

DO NOT CUT BETWEEN A & B

### HANDS

cut two  
from  
tricot  
stretch

leave open to stuff

(Neck Line)

leave open to stuff

### ARMS

cut two on fold  
from stretch  
cotton or double  
cotton gauze

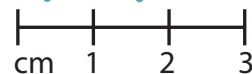
PLACE ON FOLD

The Cuddle Dolls  
WWW.NATALIETRUSLER.COM

(optional) Handstitch once  
doll is stuffed to create feet

The Cuddle Dolls  
WWW.NATALIETRUSLER.COM

Insert hands here



WWW.NATALIETRUSLER.COM

©2024 This pattern is copyright. All rights reserved.  
This pattern is for personal use only and cannot be  
sold for commercial use nor can the finish items be  
sold online for personal profit.

# The Cuddle Dolls

## DAISY & FRIENDS

AN ONLINE WALDORF DOLL MAKING WORKSHOP

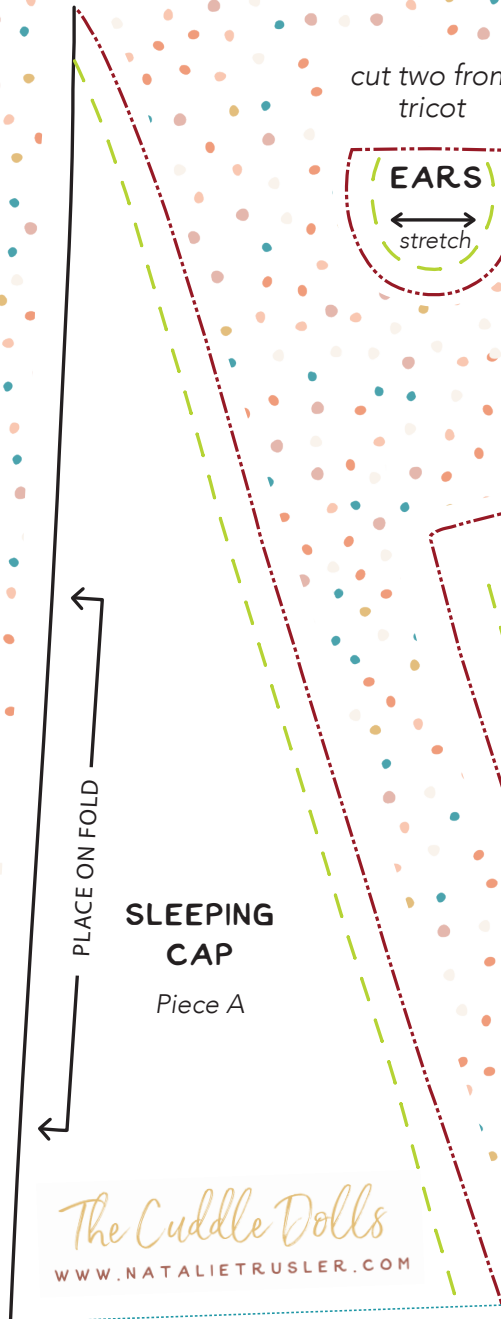
(PATTERN SCALED TO 80%)

--- = stitch line  
- - - = cutting line

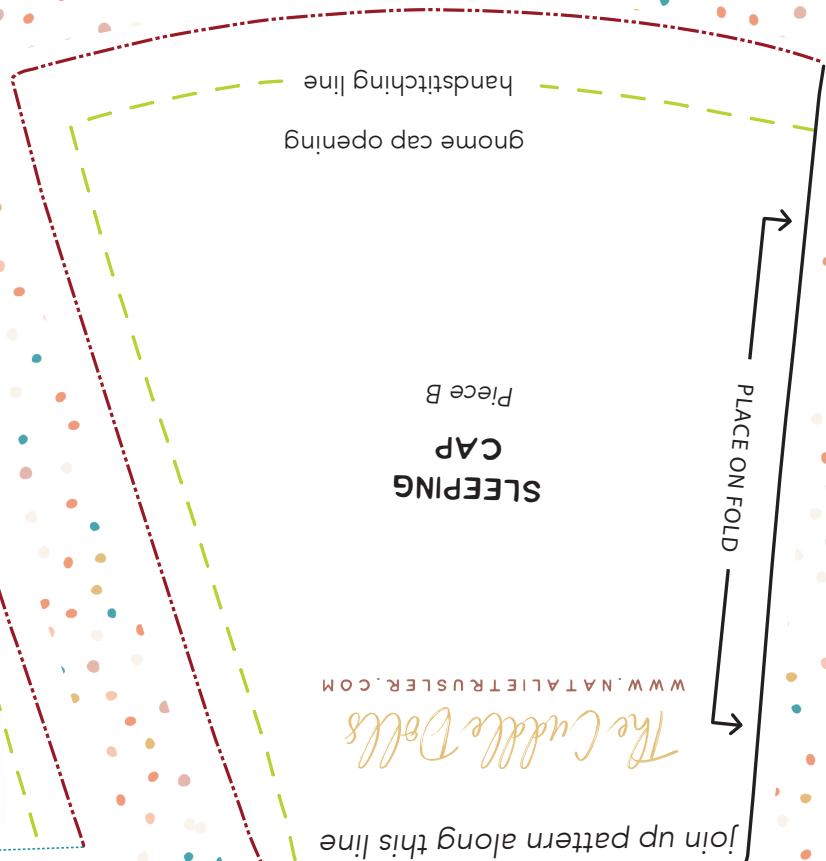


Tip: remember to leave a little so you can turn your pocket inside out (& hide your seams)

cut two from  
tricot



join up pattern along this line



join up pattern along this line



WWW.NATALIETRUSLER.COM

©2024 This pattern is copyright. All rights reserved.  
This pattern is for personal use only and cannot be  
sold for commercial use nor can the finish items be  
sold online for personal profit.

# The Cuddle Dolls

## DAISY & FRIENDS

AN ONLINE WALDORF DOLL MAKING WORKSHOP

(PATTERN SCALED TO 80%)

— = stitch line  
- - - = cutting line

### INNER BODY - OPTIONAL FOR WEIGHTED CUDDLE DOLL

cut two from  
single knit lining

The Cuddle Dolls  
WWW.NATALIETRUSLER.COM



WWW.NATALIETRUSLER.COM

©2024 This pattern is copyright. All rights reserved.  
This pattern is for personal use only and cannot be  
sold for commercial use nor can the finish items be  
sold online for personal profit.