

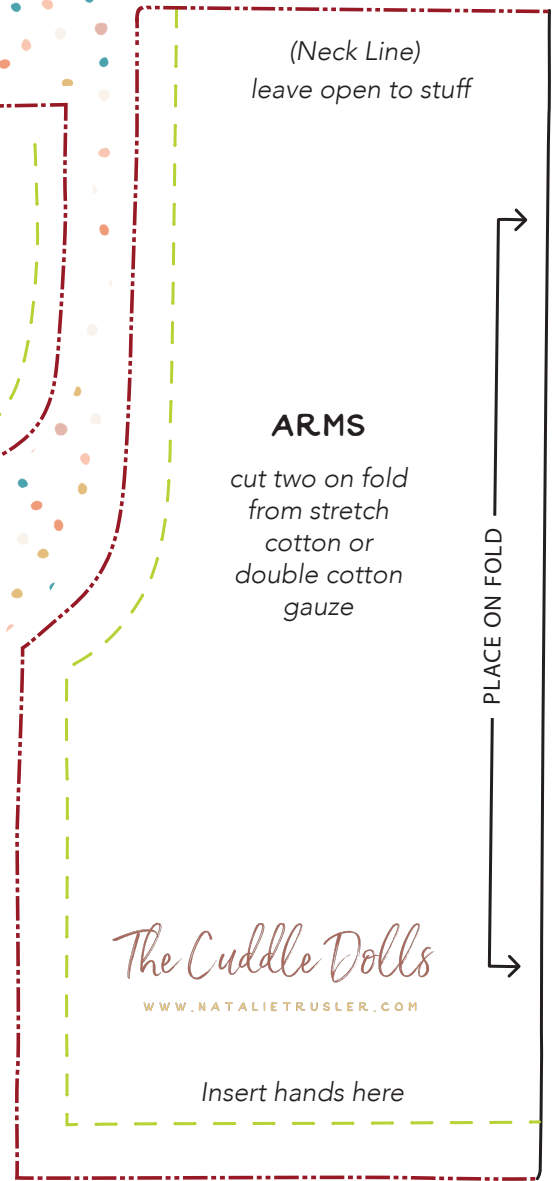
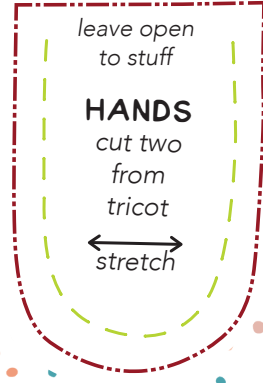
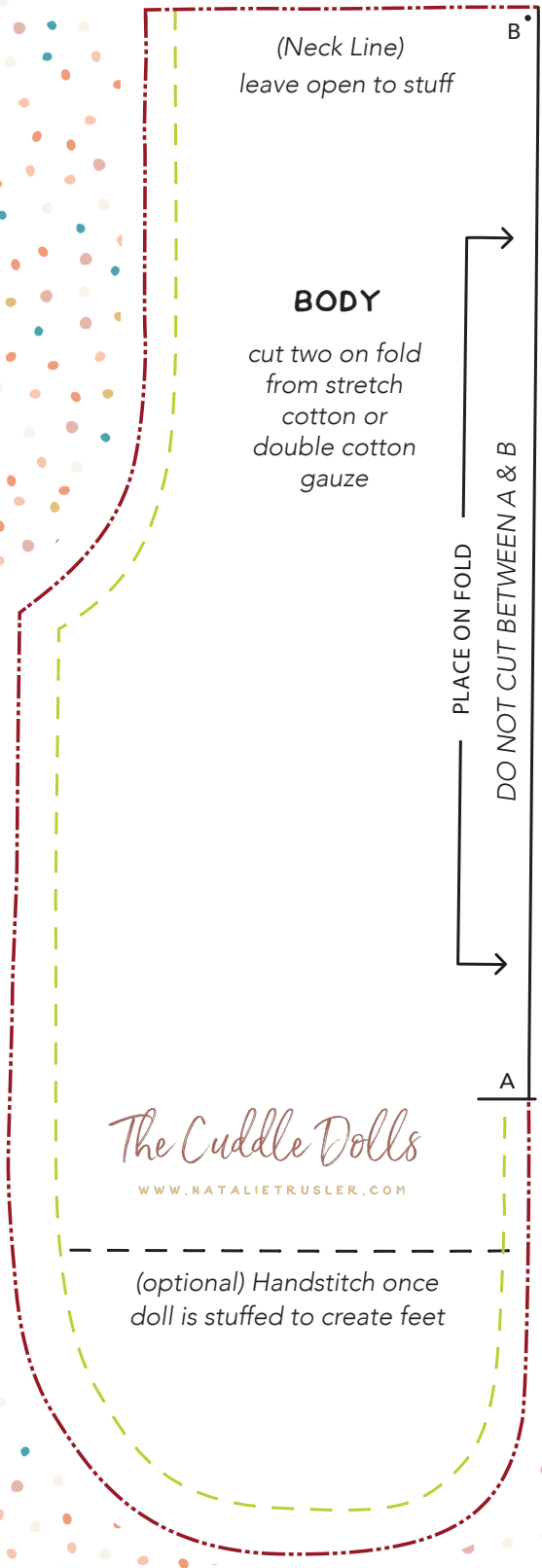
The Cuddle Dolls

LEARN TO SEW A WALDORF INSPIRED SOFT DOLL

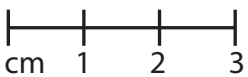


(PATTERN SCALED TO 90%)

--- = stitch line
- - - = cutting line



© Natalie Trusler 2025 This pattern is copyright.
All rights reserved. This pattern is for personal use only
and cannot be sold for commercial use nor can the
finish items be sold online for personal profit.



The Cuddle Dolls

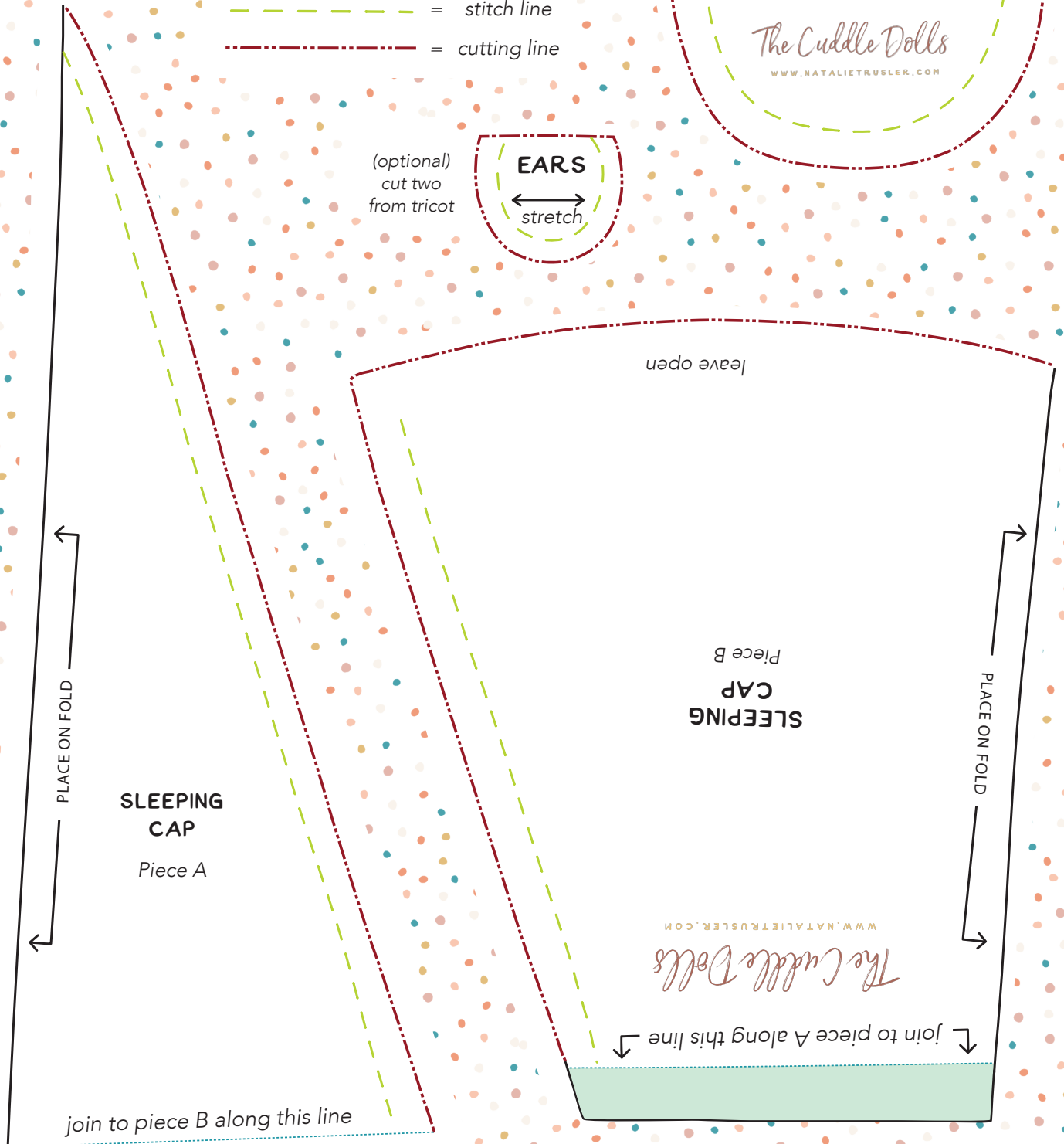
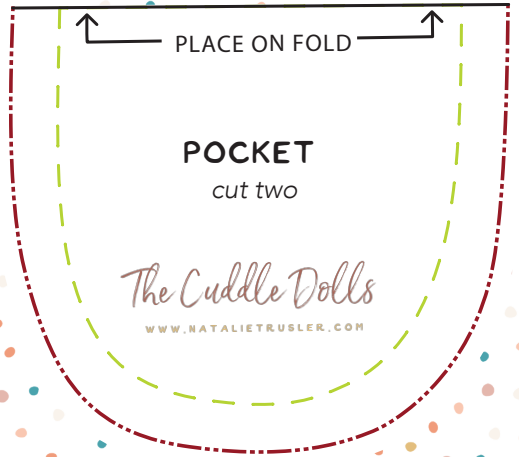
LEARN TO SEW A WALDORF INSPIRED SOFT DOLL



(PATTERN SCALED TO 90%)

--- = stitch line
- - - = cutting line

(optional)
cut two
from tricot



© Natalie Trusler 2025 This pattern is copyright.
All rights reserved. This pattern is for personal use only
and cannot be sold for commercial use nor can the
finish items be sold online for personal profit.



The Cuddle Dolls

LEARN TO SEW A WALDORF INSPIRED SOFT DOLL



(PATTERN SCALED TO 90%)

--- = stitch line
- - - = cutting line

**INNER BODY -
OPTIONAL FOR
WEIGHTED CUDDLE DOLL**

*cut two from
single knit lining*

The Cuddle Dolls

WWW.NATALIETRUSLER.COM

© Natalie Trusler 2025 This pattern is copyright.
All rights reserved. This pattern is for personal use only
and cannot be sold for commercial use nor can the
finish items be sold online for personal profit.



WWW.NATALIETRUSLER.COM

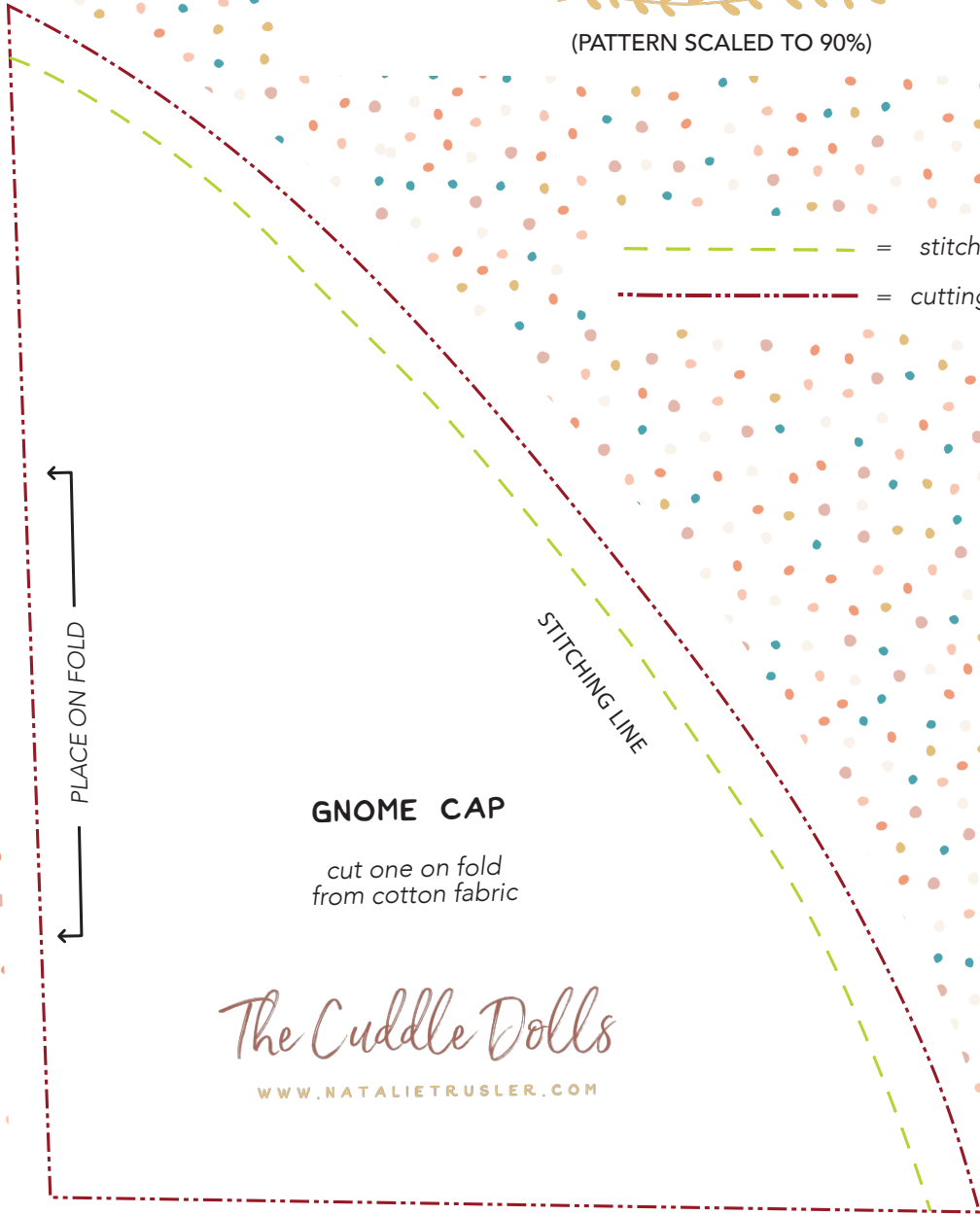
The Cuddle Dolls

LEARN TO SEW A WALDORF INSPIRED SOFT DOLL



(PATTERN SCALED TO 90%)

-  = stitch line
-  = cutting line



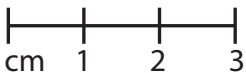
GNOME CAP

cut one on fold
from cotton fabric

The Cuddle Dolls

WWW.NATALIETRUSLER.COM

© Natalie Trusler 2025 This pattern is copyright.
All rights reserved. This pattern is for personal use only
and cannot be sold for commercial use nor can the
finish items be sold online for personal profit.



WWW.NATALIETRUSLER.COM